



OYSTER ART GALLERY

Cordially Invites You To An Exhibition
Of

Afshan Naz
Odyssey To Resilience

On

Saturday, 02 July, 2022 5:30 P.M. -9:00 P. M.

Chief Guest

IBRAHEEM HANIF RAMAY

(A Renowned Businessman & Artist)

Guest of Honors

PRO. BASHIR AHMAD

(Ex-Head of Miniature Department of NCA)

FAKIR SAIF UDDIN

(Director of Fakir Khana Museum)

HAS KINDLY CONSENTED TO INAUGURATE THE EXHIBITION

AT **5:30** P.M.

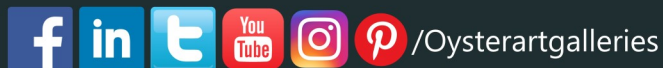
VENUE

84-B-1, M. M. Alam Road, Off Ghalib Market, Gulberg III Lahore.

Ph: +92-42-35771879, Mob: +92-314-4197232

Email: admin@oysterartgalleries.com

Website: www.oysterartgalleries.com





AFSHAN NAZ

Afshan Naz is Masters in Fine arts from university of Punjab (PUCAD) Pakistan in 2002. After that she worked as an apprentice from Ustad Bashir Ahmed and also as a calligrapher from N.C.A. Currently she is working as freelance artist, regularly participating art exhibition in Pakistan & Turkey. She is academically trained in oil mixed medium. Her major interest in Research & art practice in contemporary & traditional miniature painting, Mughal miniature, Orientalism, imperialism & Modern & contemporary art. My decision to select miniature as a major subject was influenced by the urge to create and to depict my emotions and situation in my own sensitive way for which I found miniature as a perfect medium. My work is mainly inspired by the Mughal school of Miniature painting, it is an amalgamation of the traditional and contemporary style. The use of deep colors is prominent in my work. I try creating depth by the use of undulating strokes which defines the painting.



ODYSSEY TO RESILIENCE

A Journey of women empowerment of Mughal Era

A Solo Exhibition "Odyssey To Resilience" of Afshan Naz Opening on Saturday, July 02, 2022, 5:30 P.M.

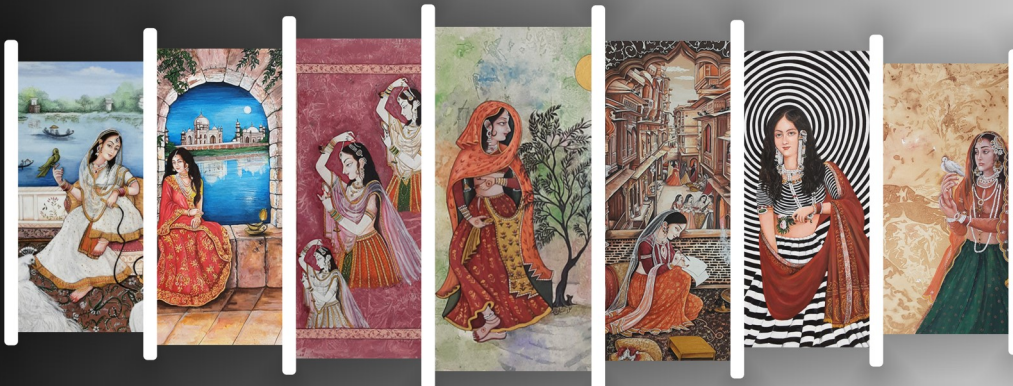


A Solo Exhibition

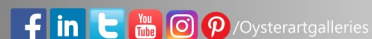
ODYSSEY TO RESILIENCE

Of

AFSHAN NAZ



84-B-1, M. M. Alam Road, Off Ghalib Market, Gulberg III Lahore.
Email: admin@oysterartgalleries.com Website: www.oysterartgalleries.com
Ph: +92-42-35771879, Mob: +92-314-4197232





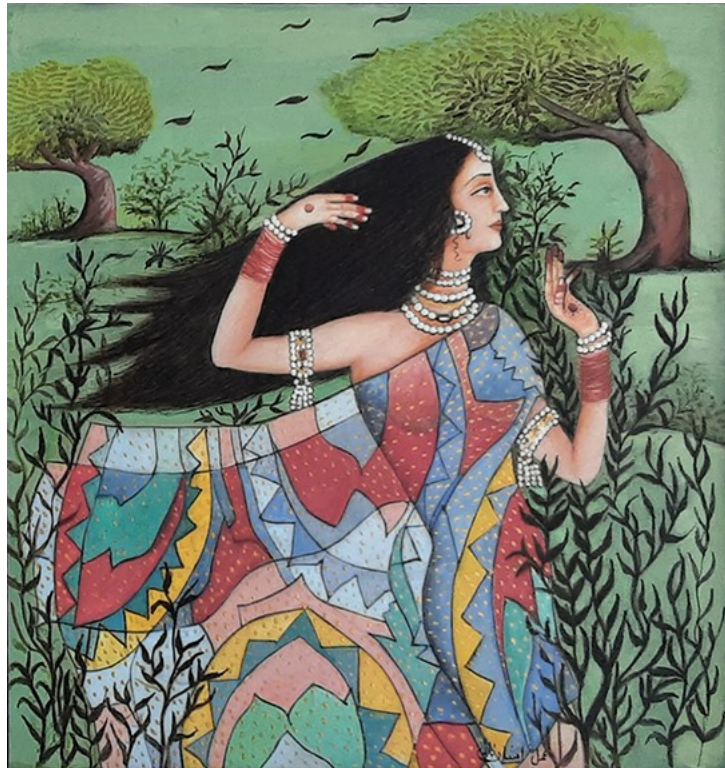
Code: 3444, 13x21, Gouache on Wasli.



Code: 3063, 9.4x11.4, Gouache on Wasli.



Code: 3066, 10x13, Gouache on Wasli.



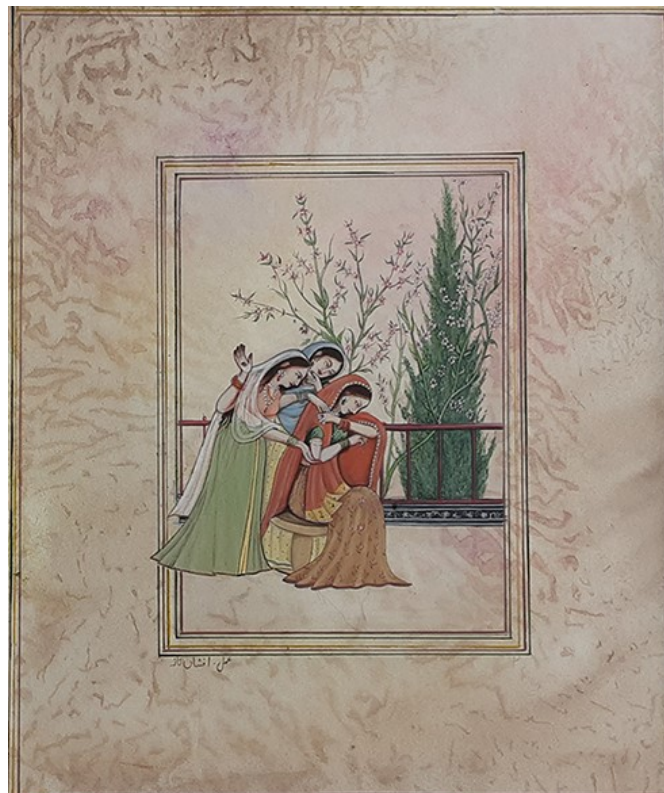
Code: 2725, 7x7, Gouache on Wasli.



Code: 2727, 9x11, Gouache on Wasli.



Code: 2726, 7x8.4, Gouache on Wasli.



Code: 2728, 10x12, Gouache on Wasli.



Code: 3430, 9.3x12, Gouache on Wasli.



Code: 3429, 9.4x12, Gouache on Wasli.



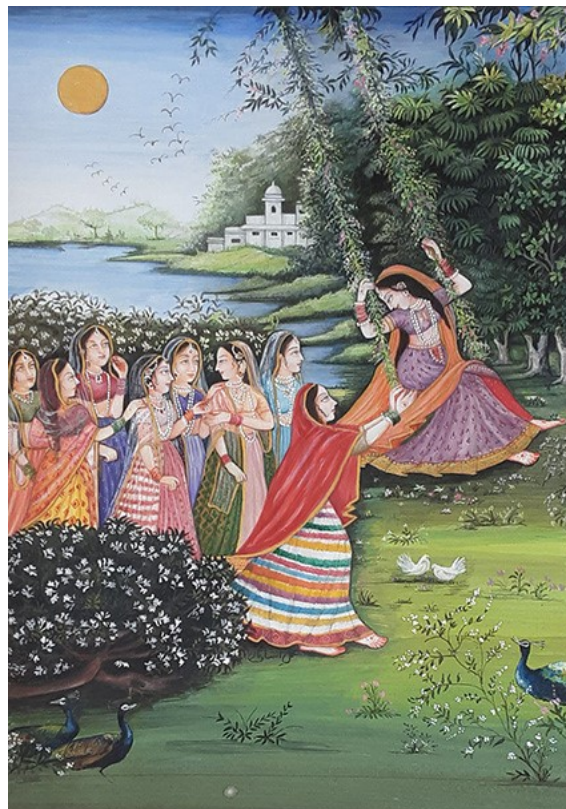
Code: 3432, 9.4x12, Gouache on Wasli.



Code: 3434, 9x12, Gouache on Wasli.



Code: 3425, 7x13, Gouache on Wasli.



Code: 3426, 8.4x12, Gouache on Wasli.



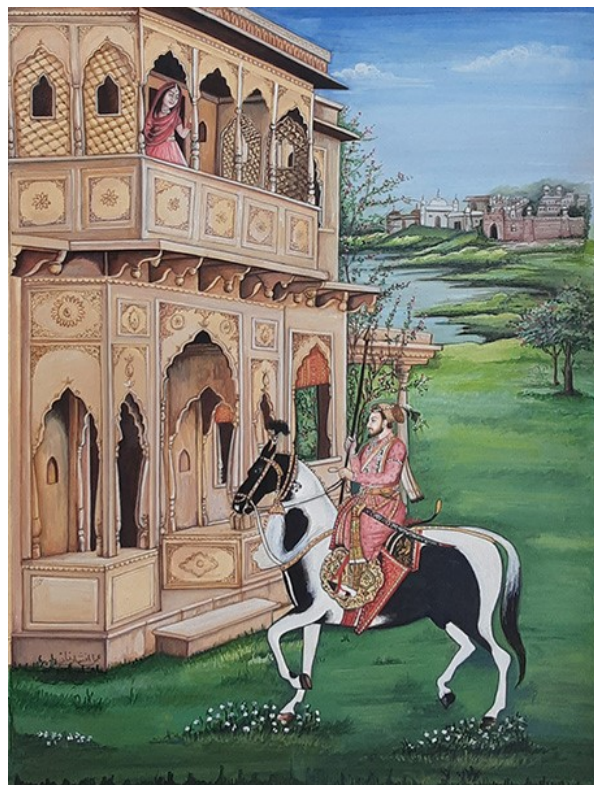
Code: 3427, 8x11, Gouache on Wasli.



Code: 3431, 9.4x12, Gouache on Wasli.



Code: 3435, 9x13, Gouache on Wasli.



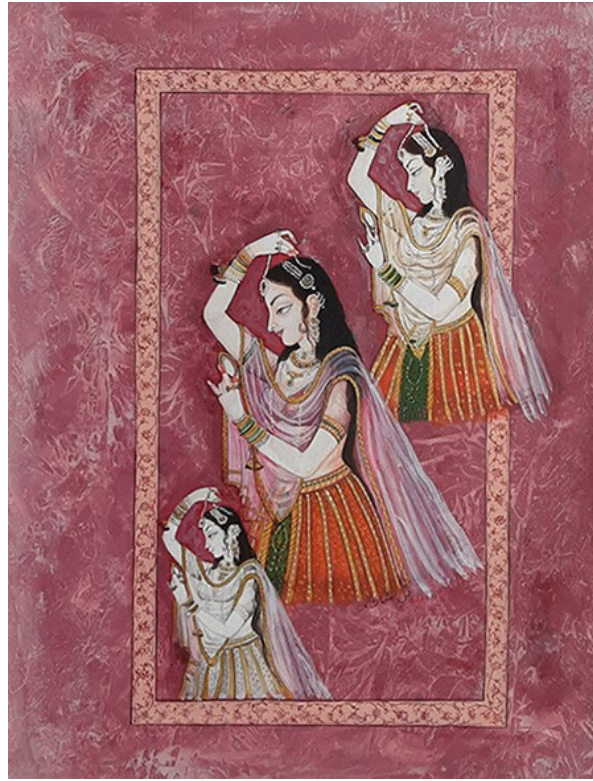
Code: 3433, 9.4x13, Gouache on Wasli.



Code: 3436, 10x12.6, Gouache on Wasli.



Code: 3437, 10x12, Gouache on Wasli.



Code: 3438, 10x13, Gouache on Wasli.



Code: 3439, 10x13.4, Gouache on Wasli.



Code: 3442, 13x20.4, Gouache on Wasli.



Code: 3441, 10x13, Gouache on Wasli.



Code: 2729, 10x11, Gouache on Wasli.



Code: 2730, 10x12, Gouache on Wasli.



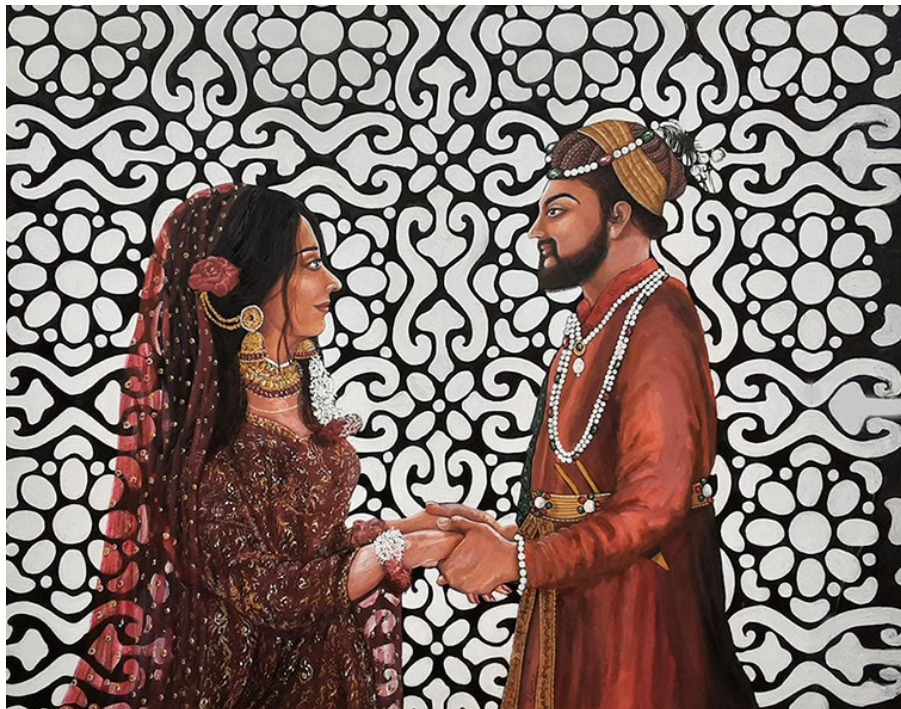
Code: 4000, 21x27, Gouache on Wasli.



Code: 3445, 17x20, Gouache on Wasli.



Code: 3443, 13x21, Gouache on Wasli.



Code: 3446, 21x26.4, Gouache on Wasli.